



A_M_P_100_3_147.2_-90B5_-_-_M1_INOIL_STD_TypSTM_N_-----

A.1.10.10 Customer references

FARM	Company	STM Finland
NAME_CUST	Customer contact person	Mikko Valtonen
ADRESS_CUST	Address	Luoteisrinne 5 - 02270 Espoo (Finland)

A.2.10.10 Product Family

M_MASTER Machine MASTER STM_HTL_MON_A-G

A.2.10.20 Family Features

G	CHR	A	Feature No.1	Inline gearboxes and gear motors A

A.3.10.10 Gearbox coding parameters - BASIC

M	Machine	A
IV	Input Version	M = pre arrangement motor
SIZE	Size	100 = Size_100
MFG	Modular feet	- = Not modular feet
OV	Output Version	P = feet design
OF	Output flange	F0 = Support for output without holes - for version with feet
NOR	No. of stages	3
IR	Reduction ratio	147.2
IVT	Input Version - TYPE	IEC = IEC - Motor Type
IS	Input shaft	90B5
TOBE	Tapered Output Bearings	- = Standard radial or tapered bearings
TYPSED	Output shaft type	SI = mm
SD	Shaft Diameter	Ø50
MP	Mounting positions	M1

A.3.30.10 OPT - Options - Material of sealing rings

OPT OPT - Options - Material of sealing rings - = Seal-Type - STANDARD

OPT1 OPT1 - Options - Oil supply status **INOIL STD = Gearbox with lubricant STM standard**

A.3.30.30 OPT2 - Options - Painting

OPT2 OPT2 - Options - Painting **TypSTM = Painting and surface protection - Standard STM**

A.3.41.10 MOTOR GEARBOXES

MGBCK	Gear motors - YES/NO	N
1	YES	1
2	YES	1
3	YES	1
4	YES	1
5	YES	1
6	YES	1
7	YES	1
8	YES	1
9	YES	1
10	YES	1
11	YES	1
12	YES	1
13	YES	1
14	YES	1
15	YES	1
16	YES	1
17	YES	1
18	YES	1
19	YES	1
20	YES	1
21	YES	1
22	YES	1
23	YES	1
24	YES	1
25	YES	1
26	YES	1
27	YES	1
28	YES	1
29	YES	1
30	YES	1
31	YES	1
32	YES	1
33	YES	1
34	YES	1
35	YES	1
36	YES	1
37	YES	1
38	YES	1
39	YES	1
40	YES	1
41	YES	1
42	YES	1
43	YES	1
44	YES	1
45	YES	1
46	YES	1
47	YES	1
48	YES	1
49	YES	1
50	YES	1
51	YES	1
52	YES	1
53	YES	1
54	YES	1
55	YES	1
56	YES	1
57	YES	1
58	YES	1
59	YES	1
60	YES	1
61	YES	1
62	YES	1
63	YES	1
64	YES	1
65	YES	1
66	YES	1
67	YES	1
68	YES	1
69	YES	1
70	YES	1
71	YES	1
72	YES	1
73	YES	1
74	YES	1
75	YES	1
76	YES	1
77	YES	1
78	YES	1
79	YES	1
80	YES	1
81	YES	1
82	YES	1
83	YES	1
84	YES	1
85	YES	1
86	YES	1
87	YES	1
88	YES	1
89	YES	1
90	YES	1
91	YES	1
92	YES	1
93	YES	1
94	YES	1
95	YES	1
96	YES	1
97	YES	1
98	YES	1
99	YES	1
100	YES	1



PDF-Datasheet

Dimensioni Dimensions Abmessungen

Section:

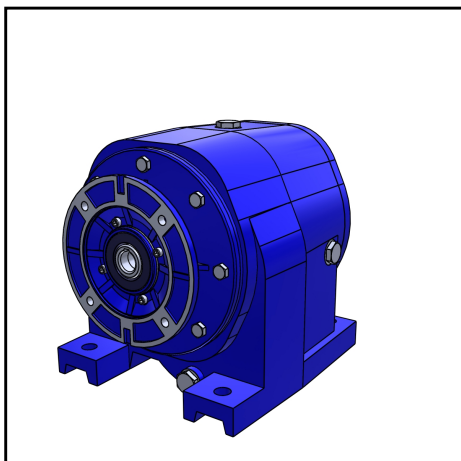
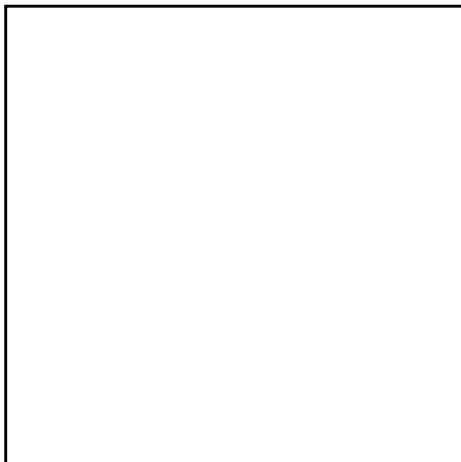
E

Designation

A_M_P_100_3_147.2_90B5_M1_INOIL_STD_TypSTM_N

E.0

Designation gearbox:



M (Machine)	A
IV (Input Version)	M = pre arrangement motor
SIZE (Size)	100 = Size_100
MFG (Modular feet)	- = Not modular feet
OV (Output Version)	P = feet design
OF (Output Flange)	F0 = Support for output without holes - for version with feet
NOR (N° of reductions)	3 = N° of reductions
IR (Reduction ratio)	147.2
IVT (Input Version - TYPE)	IEC = IEC - Motor Type
IS (Input Shaft)	90B5
TOBE (Output Bearings - TYPE)	- = Standard radial or tapered bearings
TYPST (Typ output shaft)	SI = mm
SD (Shaft Diameter)	Ø50
MP (Mounting positions)	M1
OPT (OPT - Options - Materials of Seals)	- = Seal-Type - STANDARD
OPT1 (OPT1 - Options - Scope of the supply - Options - OIL)	INOIL_STD = Gearbox with lubricant STM standard
OPT2 (OPT2 - Options - Painting and surface protection)	TypSTM = Painting and surface protection - Standard STM
MGBCK (Motor gearboxes - YES/NO)	N = NO - Motor gearboxes
MAR (Marking)	-
MGB (Motor gearboxes)	-
IN (Options inverter)	-
BF (Options balanced winding)	-
POL (Pole n.)	-
TOW (Type of winding)	-
SIZEM (Motor size)	-
LEN (Length)	-
DV (Design version)	-
PMT (Position Terminal Box)	-
AVC (Available configurations)	-
SDM (Motor shaft diameter)	-
F (Flange)	-
HB14 (n° holes flange b14)	-
IP (Protection level)	-
PLATE (Plate)	-
POW (Power)	-
CEP1 (cable entry 1 position motor)	-
CEP2 (cable entry 2 position motor)	-
TOD (Type of duty)	-
TOB (Type of brake)	-
RLP (Release lever position)	-
IPF (Protection level brake)	-



All contents, drawings and information in this document are sole property of STM S.p.A.
It cannot be disclosed for purposes other than under the agreement between the Customer and an authorized STM representative.
It cannot be reproduced (in whole or in part) without explicit written permission by STM S.p.A. legal representative,
and in this case the intellectual property of the document remains solely of STM S.p.A.
This PDF-Datasheet cancels and replace any previous edition and revision.
We reserve the right to implement modifications without notice.

Date: 03.08.2022
Page: E 1

Legal warnings: LW-2D3D-Stmstar.pdf
Email: info@stm.com
WebSite: <http://www.stmspa.com>



PDF-Datasheet

Dimensioni Dimensions Abmessungen

Section:

E

Designation A_M_P_100_3_147.2_90B5_M1_INOIL_STD_TypSTM_N

E.0

Designation gearbox:

DES (Double ended shaft)

-

PC (Cooling)

-

SAVE (Separate power servoventilation)

-

VSAVE (External power supply fan)

-

PSAVE (Separate fan terminal position)

-

CEPV (cable entry position servoventilation)

-

RS (Rain shield)

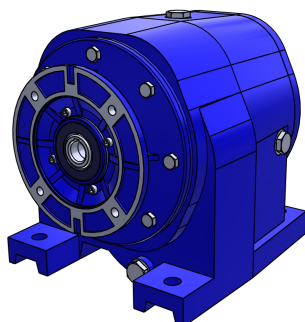
-

CEPT (Thermal cable entry position)

-

PA (Painting)

-



All contents, drawings and information in this document are sole property of STM S.p.A.
It cannot be disclosed for purposes other than under the agreement between the Customer and an authorized STM representative.
It cannot be reproduced (in whole or in part) without explicit written permission by STM S.p.A. legal representative,
and in this case the intellectual property of the document remains solely of STM S.p.A.
This PDF-Datasheet cancels and replace any previous edition and revision.
We reserve the right to implement modifications without notice.

Date: 03.08.2022

Page: E 2

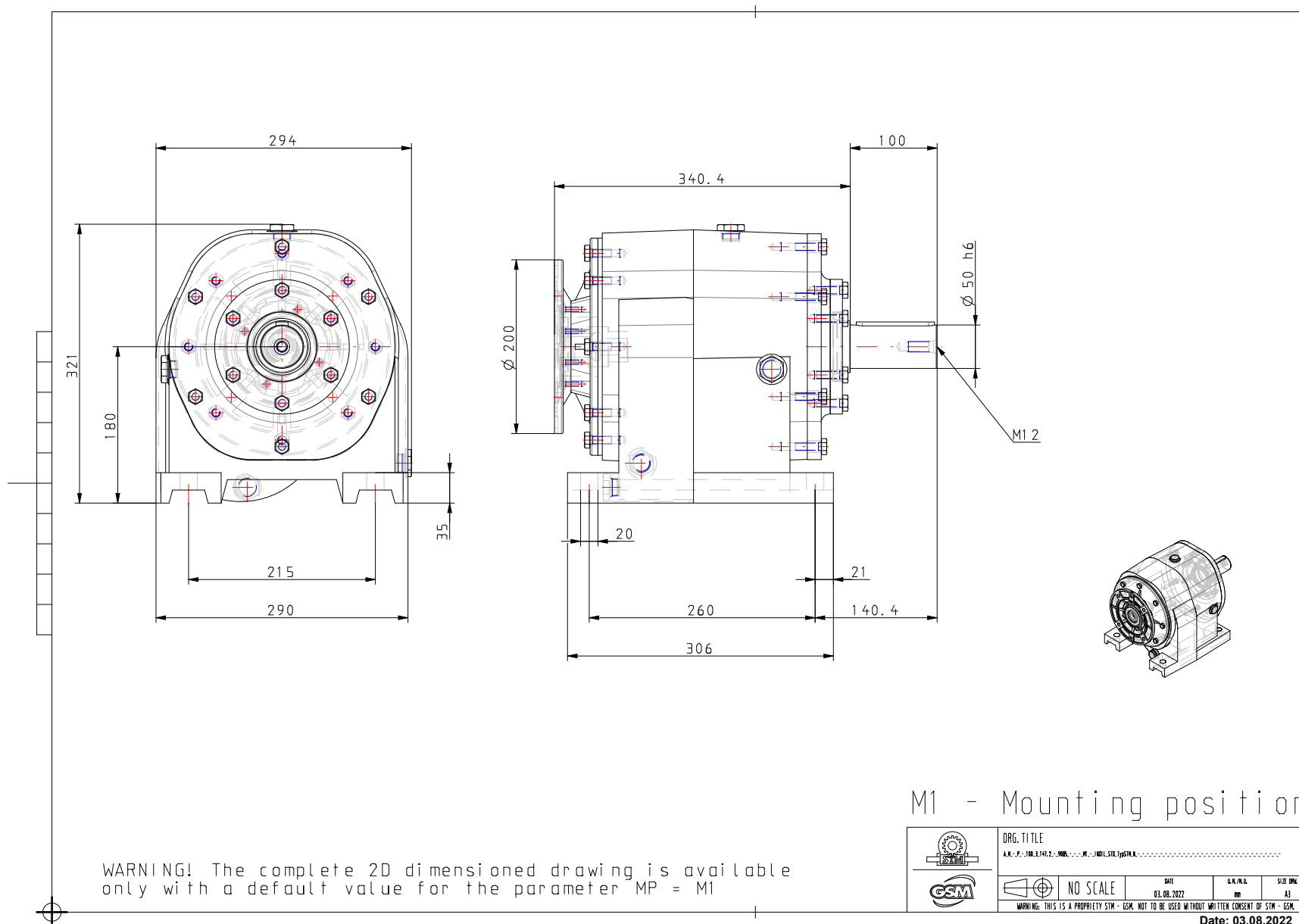
Legal warnings: LW-2D3D-Stmstar.pdf
Email: info@stm.com
WebSite: <http://www.stmspa.com>

Designation

A_M - P - 100_3_147.2 - 90B5 - - - M1 - INOIL_STD_TypSTM_N - - - - -

E.1

General Dimension 2D:



DRG. TITLE

A_M - P - 100_3_147.2 - 90B5 - - - M1 - INOIL_STD_TypSTM_N - - - - -

DATE

03.08.2022

U.N./M.L.

MP

SIZE DRG.

A3

WARNING: THIS IS A PROPRIETARY STM - GSM. NOT TO BE USED WITHOUT WRITTEN CONSENT OF STM - GSM.

Date: 03.08.2022

Page: E 3