



GENERAL DATA

Request #00536827

File: A-1-G_DST_LIGHT_EN_COMPRESSED_SI#536827

Section

A

PDF-Datasheet

A_M_-_F2_40_1_2.6_-_90B14_-_Ø20_M1_-_INOIL_STD_TypSTM_N_-----

A.1.10.10 Customer references

FARM	Company	STM Finland
NAME_CUST	Customer contact person	Mikko Valtonen
ADDRESS_CUST	Address	Luoteisrinne 5 - 02270 Espoo (Finland)

A.2.10.10 Product Family

M_MASTER	Machine_MASTER	STM_HTL_MON_A-1-G
----------	----------------	-------------------

A.2.10.20 Family Features

G_CHR_A	Feature No. 1	Single-stage gearboxes and gear motors AR/1
---------	---------------	---

A.3.10.10 Gearbox coding parameters - BASIC

M	Machine	A
IV	Input Version	M = pre arrangement motor
SIZE	Size	40 = Size_40
MFG	Modular feet	- = Not modular feet
OV	Output Version	F = fixing flange design
OF	Output flange	F2
NOR	No. of stages	1 = N° of reductions
IR	Reduction ratio	2.6
IVT	Input Version - TYPE	IEC = IEC - Motor Type
IS	Input shaft	90B14
TOBE	Tapered Output Bearings	- = Standard radial or tapered bearings
TYPST	Output shaft type	SI = mm
SD	Shaft Diameter	20
MP	Mounting positions	M1

A.3.30.10 OPT - Options - Material of sealing rings

OPT	OPT - Options - Material of sealing rings	- = Seal-Type - STANDARD
-----	---	--------------------------

A.3.30.20 OPT1 - Options - Lubricant supply status and lubricant technical specifications

OPT1	OPT1 - Options - Oil supply status	INOIL_STD = Gearbox with lubricant STM standard
------	------------------------------------	---

A.3.30.30 OPT2 - Options - Painting

OPT2	OPT2 - Options - Painting	TypSTM = Painting and surface protection - Standard STM
------	---------------------------	---

A.3.41.10 MOTOR GEARBOXES

MGBCK	Gear motors - YES/NO	N
-------	----------------------	---



All contents, drawings and information in this document are sole property of STM S.p.A.
 It cannot be disclosed for purposes other than under the agreement between the Customer and an authorized STM representative.
 It cannot be reproduced (in whole or in part) without explicit written permission by STM S.p.A. legal representative, and in this case the intellectual property of the document remains solely of STM S.p.A.
 This PDF-Datasheet cancels and replace any previous edition and revision.
 We reserve the right to implement modifications without notice.

Date: 02/08/2022
 Page A 1 of 5
 Legal warnings: LW-2D3D-Stmstar.pdf
 Email: stm@stm spa.com
 Website: www.stm spa.com



PRODUCT DATA SHEET

Request #00536827

File: A-1-G_DST_LIGHT_EN_COMPRESSED_SI#536827

Section



PDF-Datasheet

A_M_-_F2_40_1_2.6_-_90B14_-_Ø20_M1_-_INOIL_STD_TypSTM_N_____

C.1.10.30 Gearbox - Basic plate data

n1	Input shaft speed	1400	[rpm]
n2	Output shaft speed	549	[rpm]
ir_gear	Transmission ratio	2.55	[Numeric]
TN	Gearbox Nominal Output Torque	50	[Nm]
P1n	Nominal Input Mechanical Power	3	[kW]
RD%	Dynamic efficiency	97	[Numeric]
Fr(I/2) n1	Input Nominal Radial Load for Gearbox at I/2 distance	392	[N]
Fr(I/2) n2	Output Nominal Radial Load for Gearbox at I/2 distance	977	[N]
Fa n1	Input Nominal Axial Load	78	[N]
Fa n2	Output Nominal Axial Load	195	[N]
Ptn	Thermal Power Rating	5.5	[kW]



All contents, drawings and information in this document are sole property of STM S.p.A.
It cannot be disclosed for purposes other than under the agreement between the Customer and an authorized STM representative.
It cannot be reproduced (in whole or in part) without explicit written permission by STM S.p.A. legal representative, and in this case the intellectual property of the document remains solely of STM S.p.A.
This PDF-Datasheet cancels and replace any previous edition and revision.
We reserve the right to implement modifications without notice.

Date: 02/08/2022
Page C 2 of 5
Legal warnings: [LW-2D3D-Stmstar.pdf](#)
Email: stm@stm spa.com
Website: www.stm spa.com



PDF-Datasheet

Dimensioni Dimensions Abmessungen

Section:

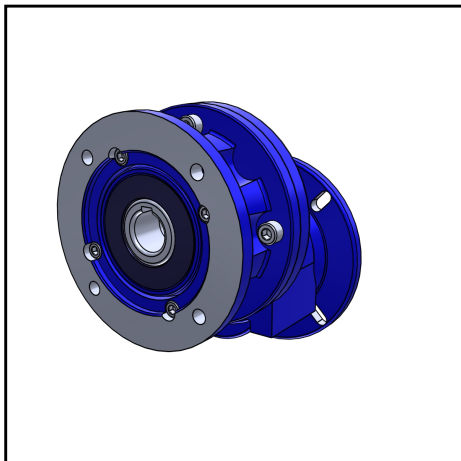
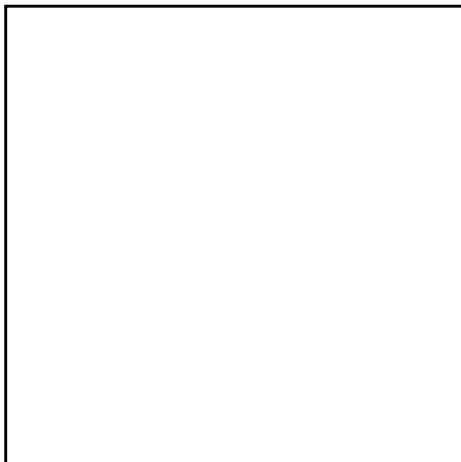
E

Designation

A_M - - F2_40_1_2.6 - 90B14 - - Ø20_M1 - INOIL_STD_TypSTM_N - - - - -

E.0

Designation gearbox:



M (Machine)	A
IV (Input Version)	M = pre arrangement motor
SIZE (Size)	40 = Size_40
MFG (Modular feet)	- = Not modular feet
OV (Output Version)	F = fixing flange design
OF (Output Flange)	F2 = fixing flange design
NOR (N° of reductions)	1 = N° of reductions
IR (Reduction ratio)	2.6
IVT (Input Version - TYPE)	IEC = IEC - Motor Type
IS (Input Shaft)	90B14
TOBE (Output Bearings - TYPE)	- = Standard radial or tapered bearings
TYPST (Typ output shaft)	SI = mm
SD (Shaft Diameter)	Ø20
MP (Mounting positions)	M1
OPT (OPT - Options - Materials of Seals)	- = Seal-Type - STANDARD
OPT1 (OPT1 - Options - Scope of the supply - Options - OIL)	INOIL_STD = Gearbox with lubricant STM standard
OPT2 (OPT2 - Options - Painting and surface protection)	TypSTM = Painting and surface protection - Standard STM
MGBCK (Motor gearboxes - YES/NO)	N = NO - Motor gearboxes
MAR (Marking)	-
MGB (Motor gearboxes)	-
IN (Options inverter)	-
BF (Options balanced winding)	-
POL (Pole n.)	-
TOW (Type of winding)	-
SIZEM (Motor size)	-
LEN (Length)	-
DV (Design version)	-
PMT (Position Terminal Box)	-
AVC (Available configurations)	-
SDM (Motor shaft diameter)	-
F (Flange)	-
HB14 (n° holes flange b14)	-
IP (Protection level)	-
PLATE (Plate)	-
POW (Power)	-
CEP1 (cable entry 1 position motor)	-
CEP2 (cable entry 2 position motor)	-
TOD (Type of duty)	-
TOB (Type of brake)	-
RLP (Release lever position)	-
IPF (Protection level brake)	-
DES (Double ended shaft)	-



All contents, drawings and information in this document are sole property of STM S.p.A.
It cannot be disclosed for purposes other than under the agreement between the Customer and an authorized STM representative.
It cannot be reproduced (in whole or in part) without explicit written permission by STM S.p.A. legal representative,
and in this case the intellectual property of the document remains solely of STM S.p.A.
This PDF-Datasheet cancels and replace any previous edition and revision.
We reserve the right to implement modifications without notice.

Date: 02.08.2022

Page: E 1

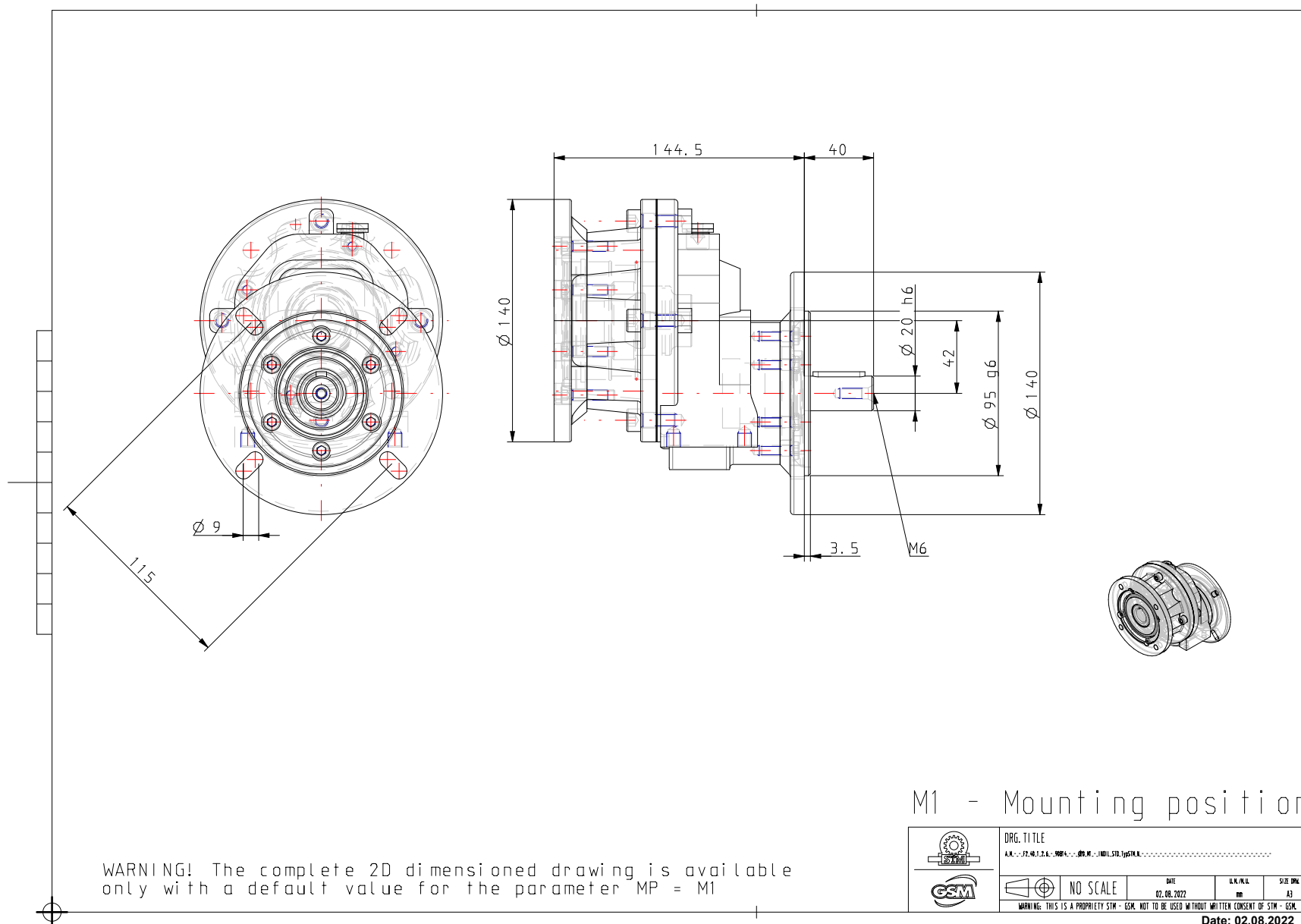
Legal warnings: LW-2D3D-Stmstar.pdf
Email: info@stm.com
WebSite: <http://www.stmspa.com>

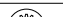


Designation

A_M_-_F2_40_1_2.6_-_90B14_-_Ø20_M1_-_INOIL_STD_TypSTM_N_-----

E.1

General Dimension 2D:



	DRG. TITLE				
	A.M. - F2.40.1.2.6 - 90B14 - Ø20 M1 - INOIL STD TypSTM - -----				
		NO SCALE	DATE	U.N./M.U.	SIZE DRG.
			02.08.2022	mm	A3
			WARNING: THIS IS A PROPRIETY STM - GSM. NOT TO BE USED WITHOUT WRITTEN CONSENT OF STM - GSM.		

Date: 02.08.2022

Page: E 3