



## PDF-Datasheet



## GENERAL DATA

Request #00220803

File: A-G\_DST\_LIGHT\_EN\_COMPRESSED\_SI#220803

Section

A

A\_M\_-P\_-80\_3\_171.2\_-80B5\_-M1\_-INOIL\_STD\_TypSTM\_N\_-

### A.1.10.10 Customer references

FARM	Company	STM Finland
NAME_CUST	Customer contact person	Mikko Valtonen
ADDRESS_CUST	Address	Luoteisrinne 5 - 02270 Espoo (Finland)

### A.2.10.10 Product Family

M_MASTER	Machine_MASTER	STM_HTL_MON_A-G
----------	----------------	-----------------

### A.2.10.20 Family Features

G_CHR_A	Feature No.1	Inline gearboxes and gear motors A
---------	--------------	------------------------------------

### A.3.10.10 Gearbox coding parameters - BASIC

M	Machine	A
IV	Input Version	M = pre arrangement motor
SIZE	Size	80 = Size_80
MFG	Modular feet	- = Not modular feet
OV	Output Version	P = feet design
OF	Output flange	F0 = Support for output without holes - for version with feet
NOR	No. of stages	3
IR	Reduction ratio	171.2
IVT	Input Version - TYPE	IEC = IEC - Motor Type
IS	Input shaft	80B5
TOBE	Tapered Output Bearings	- = Standard radial or tapered bearings
TYPST	Output shaft type	SI = mm
SD	Shaft Diameter	Ø40
MP	Mounting positions	M1

### A.3.30.10 OPT - Options - Material of sealing rings

OPT	OPT - Options - Material of sealing rings	- = Seal-Type - STANDARD
-----	---	--------------------------

### A.3.30.20 OPTI - Options - Lubricant supply status and lubricant technical specifications

OPT1	OPT1 - Options - Oil supply status	INOIL_STD = Gearbox with lubricant STM standard
------	------------------------------------	---

### A.3.30.30 OPT2 - Options - Painting

OPT2	OPT2 - Options - Painting	TypSTM = Painting and surface protection - Standard STM
------	---------------------------	---

### A.3.41.10 MOTOR GEARBOXES

MGBCK	Gear motors - YES/NO	N
-------	----------------------	---



All contents, drawings and information in this document are sole property of STM S.p.A. It cannot be disclosed for purposes other than under the agreement between the Customer and an authorized STM representative. It cannot be reproduced (in whole or in part) without explicit written permission by STM S.p.A. legal representative, and in this case the intellectual property of the document remains solely of STM S.p.A. This PDF-Datasheet cancels and replace any previous edition and revision. We reserve the right to implement modifications without notice.

Date: 06/10/2021  
Page A 1 of 5  
Legal warnings: LW-2D3D-Stmstar.pdf  
Email: [stm@stm spa.com](mailto:stm@stm spa.com)  
Website: [www.stm spa.com](http://www.stm spa.com)

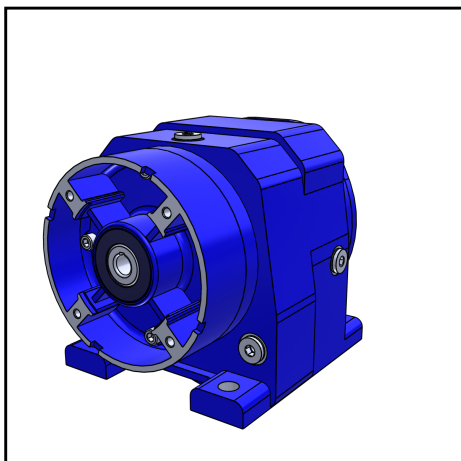
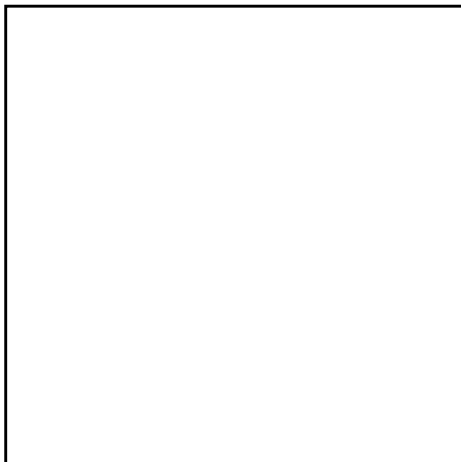


Designation

A\_M - P - 80\_3\_171.2 - 80B5 - - - M1 - INOIL\_STD\_TypSTM\_N - - - - -

E.0

Designation gearbox:



M (Machine)	A
IV (Input Version)	M = pre arrangement motor
SIZE (Size)	80 = Size_80
MFG (Modular feet)	- = Not modular feet
OV (Output Version)	P = feet design
OF (Output Flange)	F0 = Support for output without holes - for version with feet
NOR (N° of reductions)	3 = N° of reductions
IR (Reduction ratio)	171.2
IVT (Input Version - TYPE)	IEC = IEC - Motor Type
IS (Input Shaft)	80B5
TOBE (Output Bearings - TYPE)	- = Standard radial or tapered bearings
TYPST (Typ output shaft)	SI = mm
SD (Shaft Diameter)	Ø40
MP (Mounting positions)	M1
OPT (OPT - Options - Materials of Seals)	- = Seal-Type - STANDARD
OPT1 (OPT1 - Options - Scope of the supply - Options - OIL)	INOIL_STD = Gearbox with lubricant STM standard
OPT2 (OPT2 - Options - Painting and surface protection)	TypSTM = Painting and surface protection - Standard STM
MGBCK (Motor gearboxes - YES/NO)	N = NO - Motor gearboxes
MAR (Marking)	-
MGB (Motor gearboxes)	-
IN (Options inverter)	-
BF (Options balanced winding)	-
POL (Pole n.)	-
TOW (Type of winding)	-
SIZEM (Motor size)	-
LEN (Length)	-
DV (Design version)	-
PMT (Position Terminal Box)	-
AVC (Available configurations)	-
SDM (Motor shaft diameter)	-
F (Flange)	-
HB14 (n° holes flange b14)	-
IP (Protection level)	-
PLATE (Plate)	-
POW (Power)	-
CEP1 (cable entry 1 position motor)	-
CEP2 (cable entry 2 position motor)	-
TOD (Type of duty)	-
TOB (Type of brake)	-
RLP (Release lever position)	-
IPF (Protection level brake)	-
DES (Double ended shaft)	-
PC (Cooling)	-
SAVE (Separate power servoventilation)	-
VSAVE (External power supply fan)	-
PSAVE (Separate fan terminal position)	-
CEPV (cable entry position servoventilation)	-
RS (Rain shield)	-
CEPT (Thermal cable entry position)	-
PA (Painting)	-

### General Dimension 2D:





PDF-Datasheet

# Dimensioni Dimensions Abmessungen

Section:

**E**

Designation

A\_M - P - 80\_3\_171.2 - 80B5 - - - M1 - INOIL\_STD\_TypSTM\_N - - - - -

E.1

General dimensions: ROTATION DIRECTION



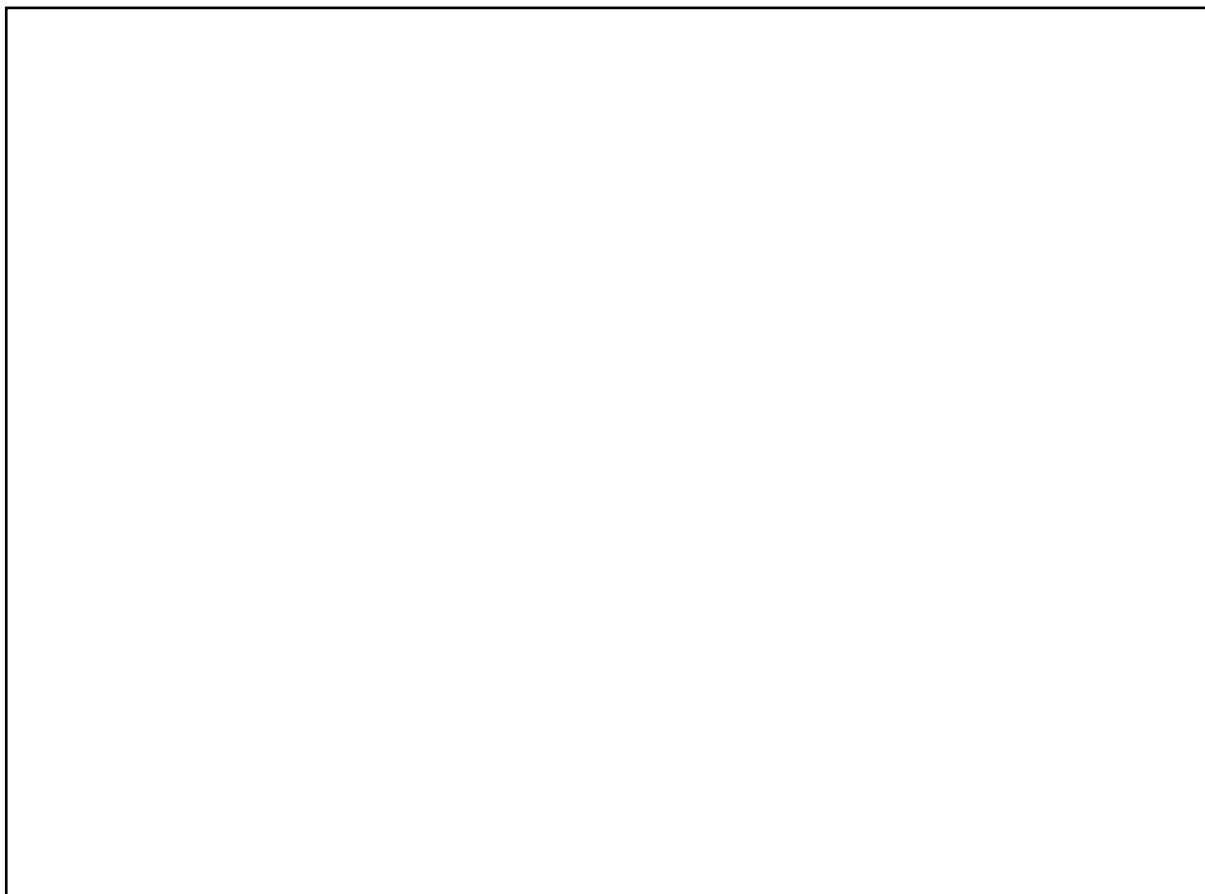
E.1

General dimensions: DRAWING PLUG (DETAILS DRW OF CHAPTER D.1.20.10)

E.1 -

MP\_Mounting positions

M1



All contents, drawings and information in this document are sole property of STM S.p.A.  
It cannot be disclosed for purposes other than under the agreement between the Customer and an authorized STM representative.  
It cannot be reproduced (in whole or in part) without explicit written permission by STM S.p.A. legal representative,  
and in this case the intellectual property of the document remains solely of STM S.p.A.  
This PDF-Datasheet cancels and replace any previous edition and revision.  
We reserve the right to implement modifications without notice.

Date: 06.10.2021  
Page: E 3

Legal warnings: LW-2D3D-Stmstar.pdf  
Email: [info@stm.com](mailto:info@stm.com)  
WebSite: <http://www.stmspa.com>