



PDF-Datasheet



GENERAL DATA

Request #00220752

File: A-G_DST_LIGHT_EN_COMPRESSED_SI#220752

Section

A

A_M_P2_--_41_2_28.6_-_71B14_--_M1_-INOIL_STD_Without_Paint_N_-----

A.1.10.10 Customer references

FARM	Company	STM Finland
NAME_CUST	Customer contact person	Mikko Valtonen
ADDRESS_CUST	Address	Luoteisrinne 5 - 02270 Espoo (Finland)

A.2.10.10 Product Family

M_MASTER	Machine_MASTER	STM_HTL_MON_A-G
----------	----------------	-----------------

A.2.10.20 Family Features

G_CHR_A	Feature No.1	Inline gearboxes and gear motors A
---------	--------------	------------------------------------

A.3.10.10 Gearbox coding parameters - BASIC

M	Machine	A
IV	Input Version	M = pre arrangement motor
SIZE	Size	41 = Size_41
MFG	Modular feet	P2
OV	Output Version	F = fixing flange design
OF	Output flange	- = Version with gearbox connection without flange
NOR	No. of stages	2 = N° of reductions
IR	Reduction ratio	28.6
IVT	Input Version - TYPE	IEC = IEC - Motor Type
IS	Input shaft	71B14
TOBE	Tapered Output Bearings	- = Standard radial or tapered bearings
TYPST	Output shaft type	SI = mm
SD	Shaft Diameter	Ø20
MP	Mounting positions	M1

A.3.30.10 OPT - Options - Material of sealing rings

OPT	OPT - Options - Material of sealing rings	- = Seal-Type - STANDARD
-----	---	--------------------------

A.3.30.20 OPT1 - Options - Lubricant supply status and lubricant technical specifications

OPT1	OPT1 - Options - Oil supply status	INOIL_STD = Gearbox with lubricant STM standard
------	------------------------------------	---

A.3.30.30 OPT2 - Options - Painting

OPT2	OPT2 - Options - Painting	Without_Paint = Without painting
------	---------------------------	----------------------------------

A.3.41.10 MOTOR GEARBOXES

MGBCK	Gear motors - YES/NO	N
-------	----------------------	---



All contents, drawings and information in this document are sole property of STM S.p.A.
It cannot be disclosed for purposes other than under the agreement between the Customer and an authorized STM representative.
It cannot be reproduced (in whole or in part) without explicit written permission by STM S.p.A. legal representative, and in this case the intellectual property of the document remains solely of STM S.p.A.
This PDF-Datasheet cancels and replace any previous edition and revision.
We reserve the right to implement modifications without notice.

Date: 06/10/2021
Page A 1 of 5
Legal warnings: LW-2D3D-Stmstar.pdf
Email: stm@stm spa.com
Website: www.stm spa.com



PDF-Datasheet



PRODUCT DATA SHEET

Request #00220752

File: A-G_DST_LIGHT_EN_COMPRESSED_SI#220752

Section



A_M_P2_-_41_2_28.6_-_71B14_-_M1_-_INOIL_STD_Without_Paint_N_-----

C.1.10.30 Gearbox - Basic plate data

n1	Input shaft speed	1400	[rpm]
n2	Output shaft speed	49	[rpm]
ir_gear	Transmission ratio	28.6	[Numeric]
TN	Gearbox Nominal Output Torque	105	[Nm]
P1n	Nominal Input Mechanical Power	0.57	[kW]
RD%	Dynamic efficiency	95	[Numeric]
Fr(l/2) n2	Output Nominal Radial Load for Gearbox at l/2 distance	2086	[N]
Fa n2	Output Nominal Axial Load	417	[N]
Ptn	Thermal Power Rating	4.5	[kW]



All contents, drawings and information in this document are sole property of STM S.p.A.
It cannot be disclosed for purposes other than under the agreement between the Customer and an authorized STM representative.
It cannot be reproduced (in whole or in part) without explicit written permission by STM S.p.A. legal representative, and in this case the intellectual property of the document remains solely of STM S.p.A.
This PDF-Datasheet cancels and replace any previous edition and revision.
We reserve the right to implement modifications without notice.

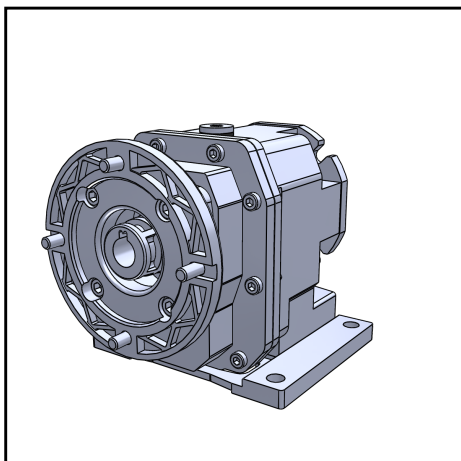
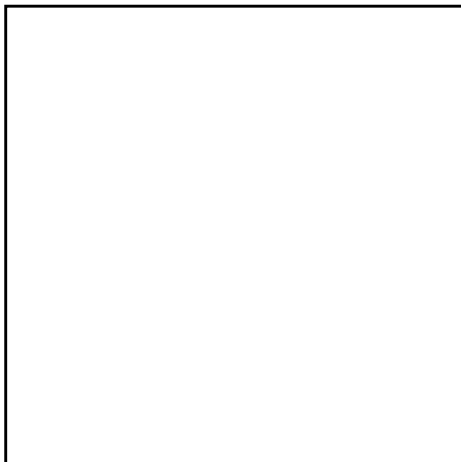
Date: 06/10/2021
Page C 2 of 5
Legal warnings: [LW-2D3D-Stmstar.pdf](#)
Email: stm@stm spa.com
Website: www.stm spa.com

Designation

A_M_P2 - - 41_2_28.6 - 71B14 - - - M1 -_INOIL_STD_Without_Paint_N - - - - -

E.0

Designation gearbox:



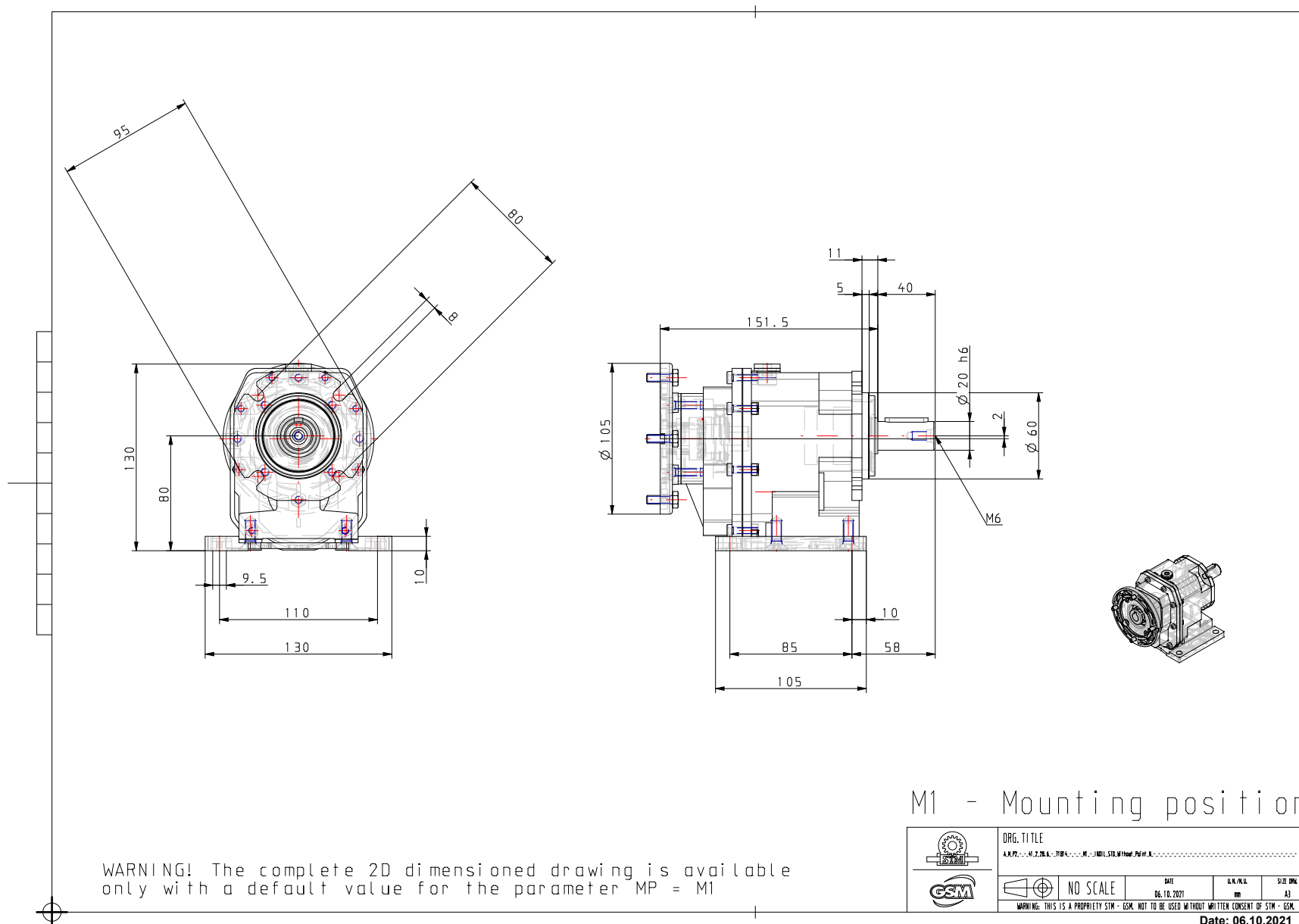
M (Machine)	A
IV (Input Version)	M = pre arrangement motor
SIZE (Size)	41 = Size_41
MFG (Modular feet)	P2 = Modular feet
OV (Output Version)	F = fixing flange design
OF (Output Flange)	- = Version with gearbox connection without flange
NOR (N° of reductions)	2 = N° of reductions
IR (Reduction ratio)	28.6
IVT (Input Version - TYPE)	IEC = IEC - Motor Type
IS (Input Shaft)	71B14
TOBE (Output Bearings - TYPE)	- = Standard radial or tapered bearings
TYPST (Typ output shaft)	SI = mm
SD (Shaft Diameter)	Ø20
MP (Mounting positions)	M1
OPT (OPT - Options - Materials of Seals)	- = Seal-Type - STANDARD
OPT1 (OPT1 - Options - Scope of the supply - Options - OIL)	INOIL_STD = Gearbox with lubricant STM standard
OPT2 (OPT2 - Options - Painting and surface protection)	Without_Paint = Without painting
MGBCK (Motor gearboxes - YES/NO)	N = NO - Motor gearboxes
MAR (Marking)	-
MGB (Motor gearboxes)	-
IN (Options inverter)	-
BF (Options balanced winding)	-
POL (Pole n.)	-
TOW (Type of winding)	-
SIZEM (Motor size)	-
LEN (Length)	-
DV (Design version)	-
PMT (Position Terminal Box)	-
AVC (Available configurations)	-
SDM (Motor shaft diameter)	-
F (Flange)	-
HB14 (n° holes flange b14)	-
IP (Protection level)	-
PLATE (Plate)	-
POW (Power)	-
CEP1 (cable entry 1 position motor)	-
CEP2 (cable entry 2 position motor)	-
TOD (Type of duty)	-
TOB (Type of brake)	-
RLP (Release lever position)	-
IPF (Protection level brake)	-
DES (Double ended shaft)	-
PC (Cooling)	-
SAVE (Separate power servoventilation)	-
VSAVE (External power supply fan)	-
PSAVE (Separate fan terminal position)	-
CEPV (cable entry position servoventilation)	-
RS (Rain shield)	-
CEPT (Thermal cable entry position)	-
PA (Painting)	-



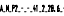
Designation

A_M_P2 - - 41_2_28.6 - 71B14 - - - M1 - INOIL_STD_Without_Paint_N - - - - -

E.1

General Dimension 2D:



	DRG. TITLE				
	A.M.P2 - 41.278.6 - 71B14 - - M1 - INOIL STD Without Paint N - - - - -				
	 NO SCALE	DATE	ELN/PLN	SIZE DRG.	
		06.10.2021	mp	A3	
		WARNING: THIS IS A PROPRIETY STM - GSM. NOT TO BE USED WITHOUT WRITTEN CONSENT OF STM - GSM.			

Date: 06.10.2021

Page: E 2



PDF-Datasheet

Dimensioni Dimensions Abmessungen

Section:

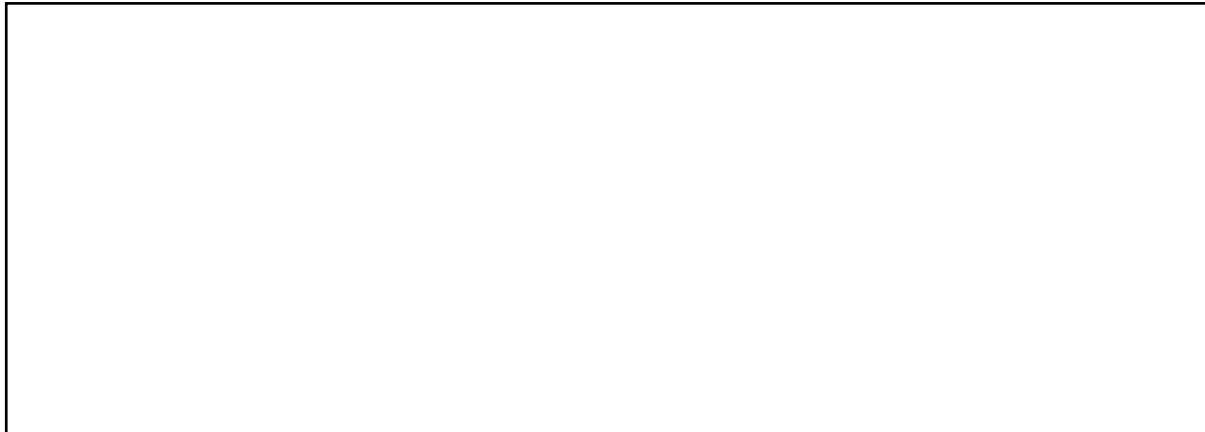
E

Designation

A_M_P2 - - 41_2_28.6 - 71B14 - - - M1 - INOIL_STD_Without_Paint_N - - - - -

E.1

General dimensions: ROTATION DIRECTION



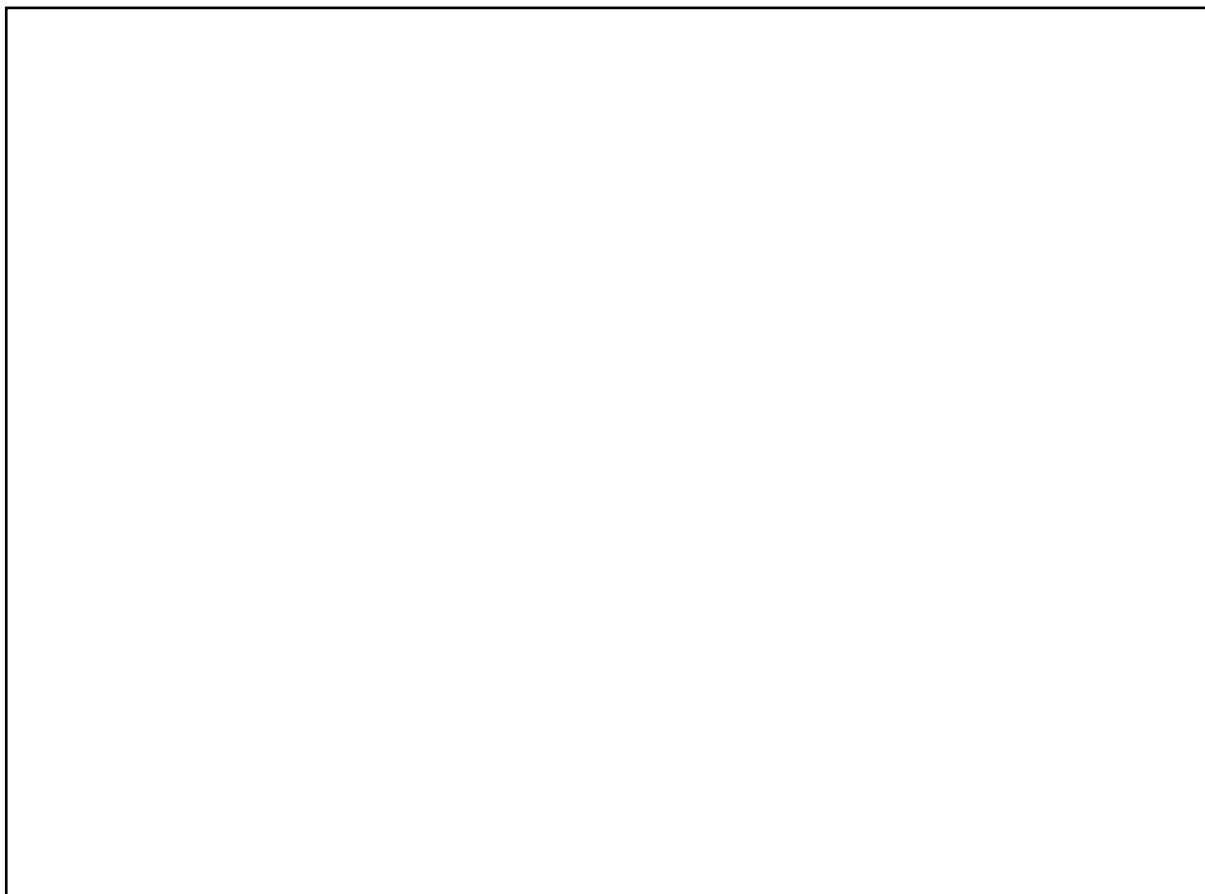
E.1

General dimensions: DRAWING PLUG (DETAILS DRW OF CHAPTER D.1.20.10)

E.1 -

MP_Mounting positions

M1



All contents, drawings and information in this document are sole property of STM S.p.A.
It cannot be disclosed for purposes other than under the agreement between the Customer and an authorized STM representative.
It cannot be reproduced (in whole or in part) without explicit written permission by STM S.p.A. legal representative,
and in this case the intellectual property of the document remains solely of STM S.p.A.
This PDF-Datasheet cancels and replace any previous edition and revision.
We reserve the right to implement modifications without notice.

Date: 06.10.2021

Page: E 3

Legal warnings: LW-2D3D-Stmstar.pdf
Email: info@stm.com
WebSite: <http://www.stmspa.com>