



PDF-Datasheet



PRODUCT DATA SHEET

Request #00155510

File: W-G_DST_LIGHT_EN_COMPRESSED_SI#155510

Section



W_MI_63_7.5_90B14_M1_INOIL_STD_TypSTM_N_-----

C.1.10.30 Gearbox - Basic plate data

n1	Input shaft speed	1400	[rpm]
n2	Output shaft speed	186.7	[rpm]
ir_gear	Transmission ratio	7.5	[Numeric]
TN	Gearbox Nominal Output Torque	126	[Nm]
P1n	Nominal Input Mechanical Power	2.8	[kW]
RD%	Dynamic efficiency	88	[Numeric]
Fr(I/2) n1	Input Nominal Radial Load for Gearbox at I/2 distance	500	[N]
Fr(I/2) n2	Output Nominal Radial Load for Gearbox at I/2 distance	2359	[N]
Fa n1	Input Nominal Axial Load	100	[N]
Fa n2	Output Nominal Axial Load	472	[N]
Ptn	Thermal Power Rating	2.16	[kW]



All contents, drawings and information in this document are sole property of STM S.p.A. It cannot be disclosed for purposes other than under the agreement between the Customer and an authorized STM representative. It cannot be reproduced (in whole or in part) without explicit written permission by STM S.p.A. legal representative, and in this case the intellectual property of the document remains solely of STM S.p.A. This PDF-Datasheet cancels and replace any previous edition and revision. We reserve the right to implement modifications without notice.

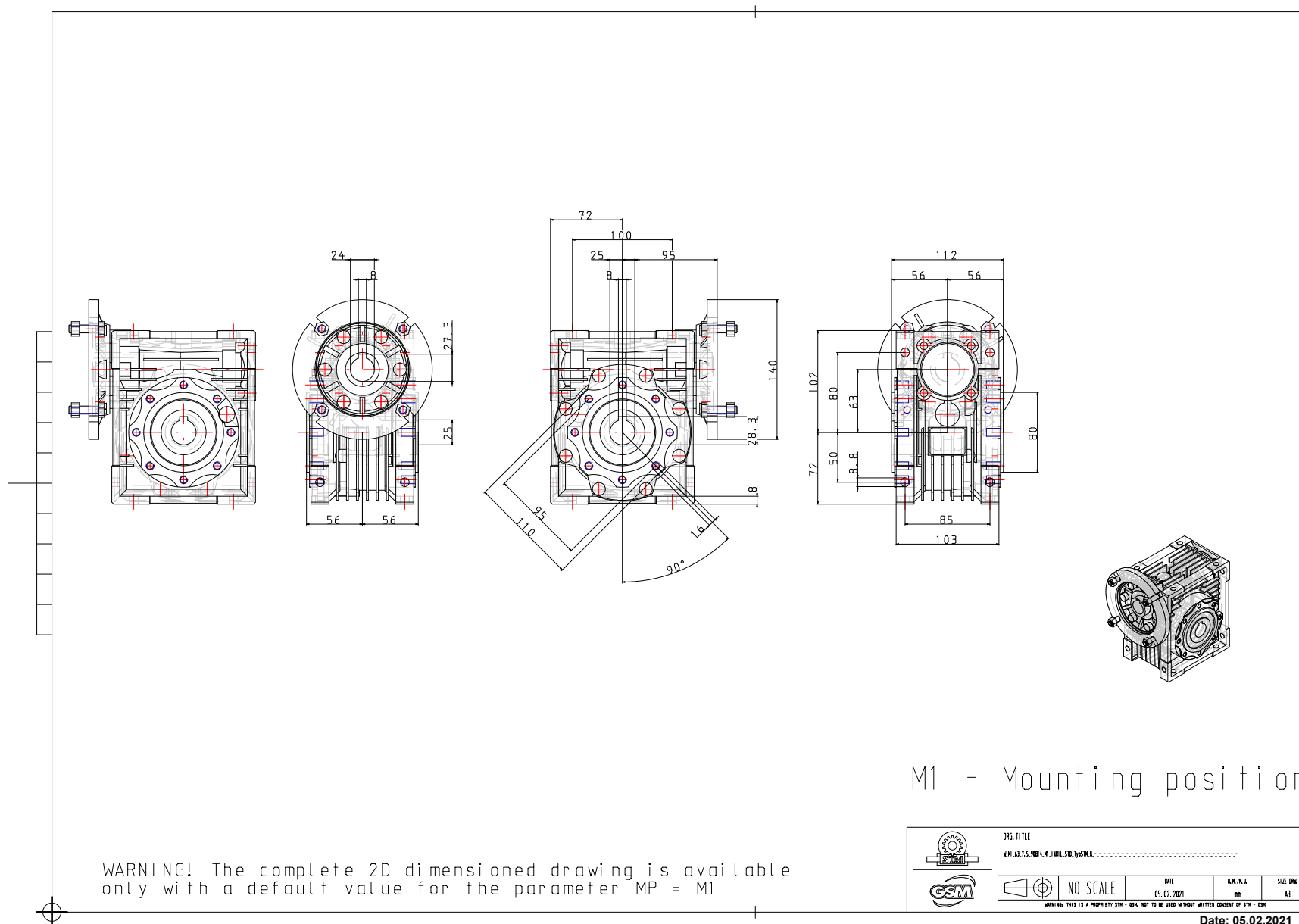
Date: 05/02/2021
Page C 3 of 6
Legal warnings: [LW-2D3D-Stmstar.pdf](#)
Email: stm@stm spa.com
Website: www.stm spa.com

Designation

W_MI_63_7.5_90B14_M1_INOIL_STD_TypSTM_N - - - - -

E.1

General Dimension 2D:



Date: 05.02.2021

Page: E 3